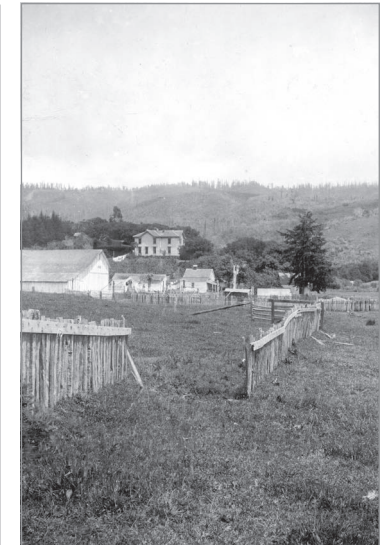


Images taken from Knob Hill after the earthquake in San Francisco, California on April 18, 1906. This view is from the corner of Van Ness Street and Washington Street. (Photograph credit: W. C. Mendenhall and US Geological Survey.)



Right: Fault trace 2 miles north of the Skinner Ranch at Olema, looking north. (Plate 10, US Geological Survey Folio 193; Plate 3-A, US Geological Survey Bulletin 324. G. K. Gilbert, 1933.)



Far right: A fence offset 2.6 m (8.5 ft) by a main fault one half mile northwest of Woodville, looking northeast. The fault fracture accompanying the earthquake is inconspicuous, although the horizontal displacement is considerable. Marin County, California. (Photograph submitted by G.K. Gilbert from the Earth Science Photographs from the US Geological Survey Library, by Joseph K. McGregor and Carl Abston, USGS Digital Data Series DDS-21, 1995.)



Modern reconstruction of the 1906 fence on the same site and in the same position. Note the displacement of approximately 7.6 m (25 ft) by 2006. (Photograph courtesy Tammi Grant.)