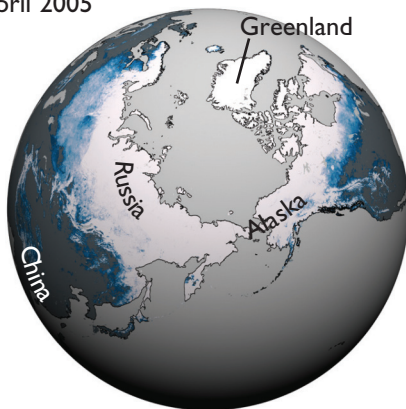
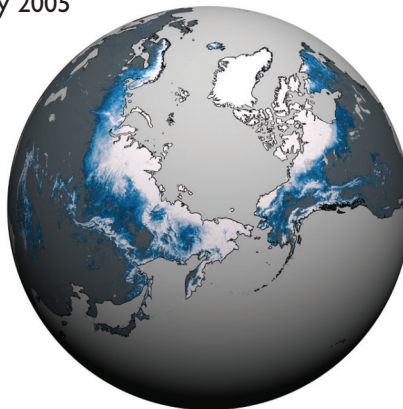


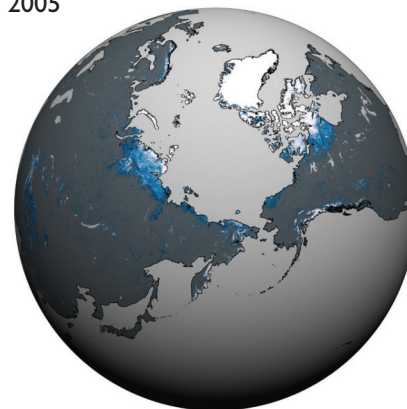
April 2005



May 2005



June 2005



July 2005



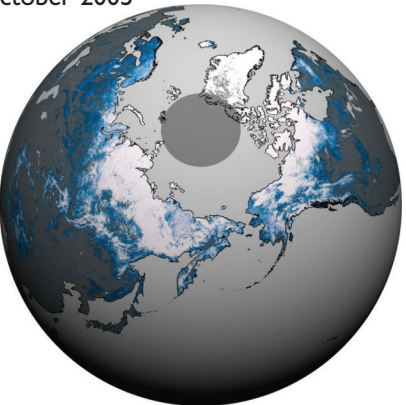
August 2005



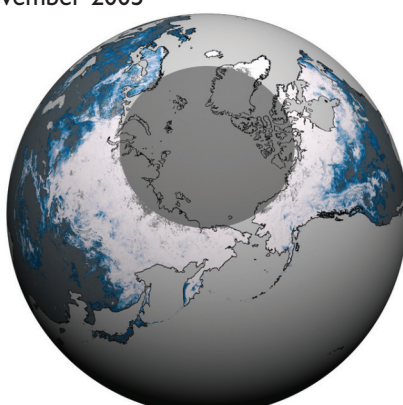
September 2005



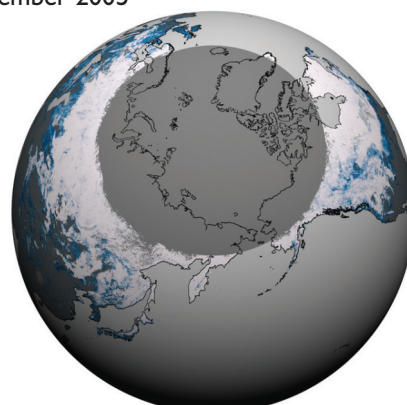
October 2005



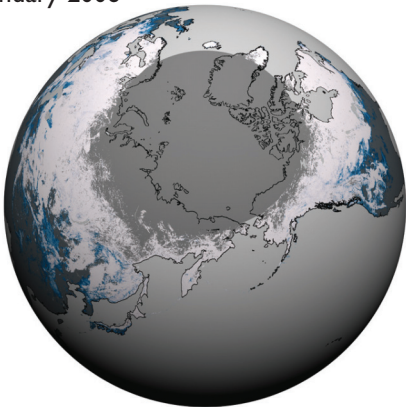
November 2005



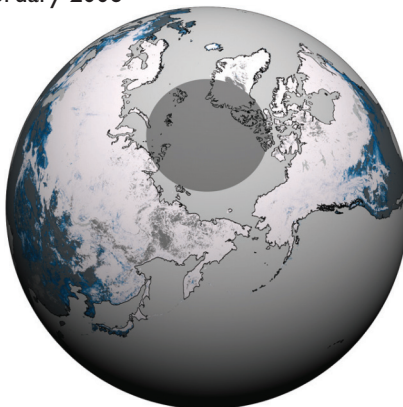
December 2005



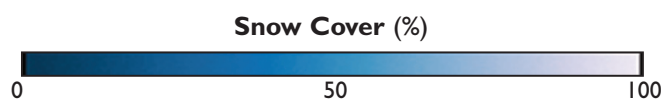
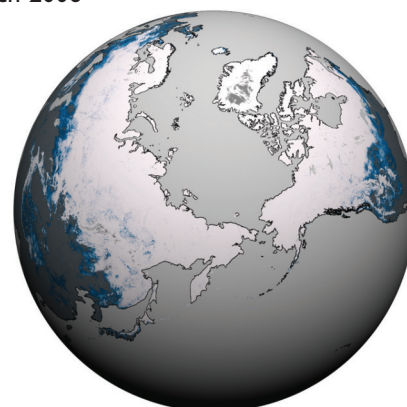
January 2006



February 2006



March 2006



Opposite: Monthly snow cover for the Northern Hemisphere from April 2005 to March 2006. The various colors represent percentages of snow cover. The gray circle in October through February indicates no data available. Portions of continents without snow cover are shown in dark gray. (Data from the MODIS instrument on the Terra satellite.)