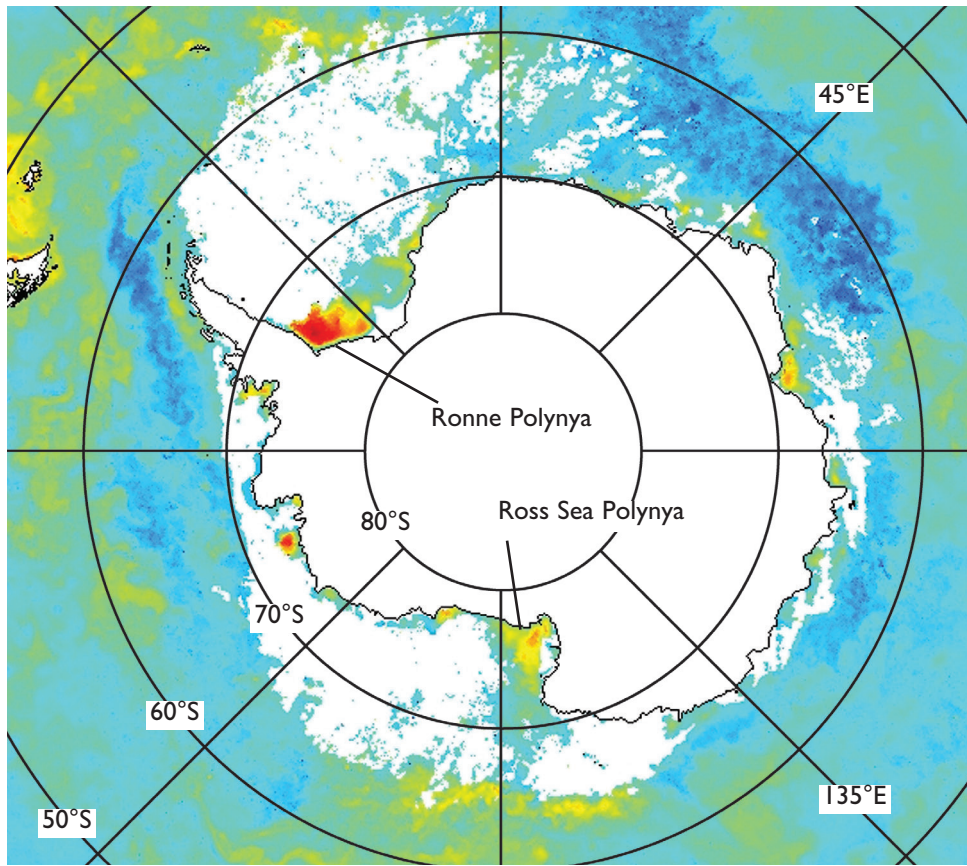


December 1997



Examples of highest chlorophyll *a* pigment concentrations (in yellow, orange and red) are located in the Weddell Sea and Ross Sea polynya regions during December 1997 (top) and February 1998 (bottom). White represents sea ice or continental ice. (Images from the SeaWiFS instrument on the OrbView-2 satellite.)

February 1998

